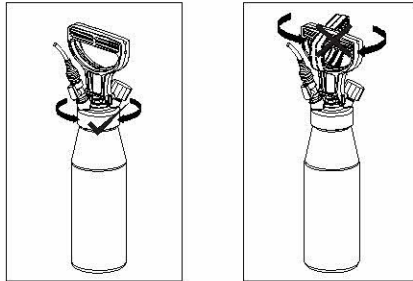


Operation

A) Opening/Closing bottle and filling insecticides:

- To open the bottle, holding the bottle cap then turning it counter clockwise.
 - Follow insecticide's label instruction and fill the well mixed water or oil based insecticide into bottle. Avoid powder or any particle in the insecticide to prevent nozzle clogged.
 - To close the bottle, holding and turning the bottle cap clockwise till tightening.
- Never open or close the bottle by turning the handle as this may damage the handle seriously.**



B) Pressurizing the sprayer:

- pressing down then $\frac{1}{4}$ turning the pump handle to unlock the pump handle
- pump plunger up and down until the required pressure is reached
- lock the pump handle

C) Application rates of multi-nozzle (measured with water at 40 psi)

fine fan -----	360ml/min., 12.2 oz/min., 80
coarse fan -----	760ml/min., 25.8 oz/min., 80
Pin stream -----	330ml/min., 11.2 oz/min
crack & crevice extension straw-----	50ml/min., 1.7 oz/min.

Application rates of aerosol nozzle (measured with water, at 60 psi):

fine, white -----	60ml/min., 2 oz/min	15-30 μ m .
medium, blue-----	90ml/min., 3 oz/min	30-50 μ m.
coarse, red -----	130ml/min., 4.4 oz	60-80 μ m
crack & crevice tip -----	115ml/min., 3.9 oz/min	

Repair and Spare Part

- do not modify the sprayer, this may cause a risk of harm and may damage the sprayer
- if any part shows signs of damage or wear, replace it immediately
- always use original spare parts for repair or maintenance